

# WELCOME TO LYON COUNTY

## RELOCATION GUIDE 2026

COMPLIMENTS OF FIRST CENTENNIAL TITLE



PHOTO COURTESY OF CHELSEA DOYEN-THOMAS



# LYON COUNTY RELOCATION GUIDE

# CONTENTS

1-15

## GENERAL INFORMATION

- Home Means Nevada
- Why Nevada?
- Nevada Tax Advantages
- Welcome to Lyon County
- City Profiles
  - Dayton
  - Fernley
  - Yerington
  - Smith Valley
  - Silver Springs
  - Silver City
- Education
- Demographics



16-22

## LOCAL SERVICES

- Local Services
- Medical Facilities
- Childcare & Youth Services
- Senior Sources
- Pet & Animal Services
- Churches & Faith Centers
- Health Clubs
- Transportation



23-30

## THINGS TO DO

- Things to Do
- Golf Courses
- Winter Recreation
- Tahoe Area Resorts
- Parks & Recreation
- Nevada State Parks





# GENERAL INFORMATION

# HOME MEANS NEVADA

**Entered the Union:** October 31, 1864 (36th)

**Capital:** Carson City

**Origin of Name:** Spanish for "snow-covered"

**State Motto:** All for Our Country

**State Nicknames:** Sagebrush State \* Silver State \* Battle Born State

**State Song:** "Home Means Nevada"

**National Forests:** 2 **State Parks:** 23

**Famous for:** Gambling, Lake Tahoe, Reno, Las Vegas, Gold & Silver Mining, Wild Mustangs and Outdoor Recreation

## STATE SYMBOLS

**Bird:** Mountain Bluebird

**Tree:** Bristlecone Pine

**Flower:** Sagebrush

**Colors:** Silver & Blue

**Animal:** Desert Bighorn Sheep

**Fish:** Lahontan Cutthroat Trout

**Grass:** Indian Ricegrass

**Fossil:** Ichthyosaur

**Rock:** Sandstone

**Metal:** Silver

## FUN FACTS

- Nevada was made famous by the 1859 discovery of the Comstock Lode, the richest known U.S. silver deposit.
- Nevada is the largest gold-producing state in the nation. It is second in the world behind South Africa.
- Nevada is the gambling and entertainment capital of the United States.
- Las Vegas has more hotel rooms than any other place on earth.
- Most of the state is desert but the Sierra Nevada mountain range near Reno and the Ruby Mountains near Elko have snow for half the year.
- Nevada has more mountain ranges than any other state, with its highest point at the 13,145 foot top of Boundary Peak near the west central border.
- About 150 couples get married in Las Vegas each day.
- In 1899 Charles Fey invented a slot machine named the Liberty Bell. In 1999 Nevada had 205,726 slot machines, one for every 10 residents.

Nevada State Flag



# WHY NEVADA?

Current Lyon County Population: 62,583\*



## Cost of Living

Nevada has an exceptionally low cost of living as compared to other states.

The Lombardo Administration is working to ensure that costs stay low, so that businesses and entrepreneurs can thrive and Nevadans can afford to raise families.

## Robust, Award Winning Higher Education Opportunities

When people think of Reno, they think of gambling. However, over the last couple of decades, Reno and Sparks have become much more than just gaming cities. With many prominent corporations residing in the area, INC magazine rated Reno as the sixth best spot to do business for a mid-sized city.

## Incentives for Nevada Business Relocation, Development and Expansion

### Modified Business Tax Abatement

- Up to 50% for 4 years

### Personal Property Tax Abatement

- Up to 50% abatement for up to 10 years

### Transferable Tax Credits

- Transferable tax credit for legislatively approved large capital investment projects

### Standard Abatements

- Data Center Abatements
- Aviation Parts Abatements
- \$1 Billion Dollar Investment Abatements
- Workforce Innovations for a New Nevada
- Governor's Office of Energy Abatement for Renewable Energy
- NV Energy Business Incentives

## Sports Capital of the World

### Nevada Hosts:

1. Formula 1
2. NHL, featuring Stanley Cup Winning team Las Vegas Golden Knights
3. UFC
4. Nascar
5. WNBA, featuring two-time playoff winning team The Aces
6. Soon to be the home of the Las Vegas A's MLB Team
7. Host of Super Bowl LVIII

## SALES TAX RATE

Carson County	7.60
Churchill County	7.60
Clark County	8.38
Douglas County	7.10
Lyon County	7.10
Storey County	7.60
Washoe County	8.27



# Nevada Tax Advantages

**WHAT DO YOU THINK OF LIVING IN A STATE WITH NO STATE INCOME TAX?  
IT'S JUST ONE OF THE MANY COMPELLING REASONS TO CALL THE SILVER STATE HOME.**

**The requirements are simple, and the benefits can be quite impressive.**

To qualify for these tax benefits, you must establish Nevada as your primary residence. This doesn't prevent you from conducting business or owning property in other states; Nevada just needs to be where you have the strongest ties.

As a Nevada resident, you can generally avoid state income taxes, except for income earned from sources in other states. Even if you must allocate part of your income to a state with an income tax, you may still see a significant reduction in your overall tax liability.

Nevada provides numerous tax advantages for individuals and businesses looking to relocate.

## **Reasons to consider Nevada for your home and business:**

- No personal income tax
- No corporate income tax
- No gross receipts tax
- No franchise tax
- No inventory tax
- No tax on issuance of corporate shares
- No requirements of shareholders and directors to live in Nevada
- No tax on sale or transfer of shares
- No succession or inheritance with IRS
- No sharing information with the IRS
- Simple annual requirements
- Protection for Directors and Officers
- No initial or minimum capital requirements
- Anonymity of owners-total privacy
- Low property taxes
- Business friendly environment

**We are not tax attorneys or CPAs. We recommend you consult your tax advisor.**



# WELCOME TO LYON COUNTY

Lyon County, one of Nevada's original counties established in 1861, carries a rich history intertwined with modern growth. Named after Civil War hero General Nathaniel Lyon, the county sits in northwestern Nevada and includes the incorporated cities of Fernley and Yerington, each offering unique opportunities and charm.

Lyon County is surrounded by notable neighbors like Carson City and Washoe County, with easy access to northern Nevada's economic hubs. Adding to its appeal, three rivers—the Carson River, Truckee River, and Walker River—traverse the county, providing stunning landscapes and vital resources for agriculture and recreation.

Historically rural, Lyon County has seen a steady transformation as northern Nevada continues to develop. While much of the county retains its peaceful, rural character, some areas have embraced suburbanization. Recognized as one of the fastest-growing counties in the U.S. for three years within the last decade, Lyon County balances tradition and modern living.

With no state income tax, corporate income tax, or inventory tax, Nevada offers a business-friendly climate that makes Lyon County an ideal place for entrepreneurs and established companies. The financial benefits and strategic location create opportunities for significant growth and investment.

Whether you're drawn to its rich history, natural beauty, or forward-focused development, Lyon County offers the perfect setting to plant roots, build a business, and thrive.





# DAYTON

Dayton, Nevada, combines its historic mining town charm with the conveniences of modern living. Old Town Dayton preserves its quaint character, while surrounding areas have expanded to include subdivisions, medical complexes, and diverse services like dining, shopping, and plans for a new hospital. Community features such as schools, a library, a senior center, and recreational options like hiking in Dayton State Park and golfing at the Arnold Palmer-designed course add to its appeal. With a rich history and a growing list of amenities, Dayton offers the perfect blend of heritage and progress.

## DISTANCES TO OTHER CITIES

CITY	MILES
CARSON CITY	12.6
RENO	41.6
VIRGINIA CITY	10.7
LAKE TAHOE	32.3
FERNLEY	38.2
YERINGTON	52.3
SMITH VALLEY	61.3
SILVER SPRINGS	24.1
SILVER CITY	7
FALLON	78.9

**CURRENT POPULATION DAYTON, NV: 15,415**

As of 2022

## DAYTON CLIMATE

TEMP	HIGH	LOW
JANUARY	47'	31'
MARCH	55'	37'
MAY	70'	49'
JULY	90'	66'
SEPTEMBER	80'	57'
NOVEMBER	55'	37'

# FERNLEY

Fernley, Nevada, is the perfect place to call home for those seeking a balance between career opportunities and outdoor adventure. Ideally located at the intersection of major transportation routes, Fernley offers a quick commute to employment hubs like Reno and USA Parkway, making it a convenient base for professionals. The city's growing industrial parks and affordable housing options attract both businesses and families, creating a vibrant and welcoming community.

For outdoor enthusiasts, Fernley is a dream come true. With Pyramid Lake to the north, Lake Lahontan to the south, and the Truckee River to the west, residents enjoy easy access to fishing, boating, camping, and hiking. Over 300 days of sunshine and proximity to Lake Tahoe add even more reasons to explore the surrounding natural beauty. Fernley offers the perfect combination of small-town charm, career accessibility, and outdoor lifestyle, making it an irresistible choice for relocation.

**CURRENT POPULATION FERNLEY, NV: 24,744**

As of 2022

## FERNLEY CLIMATE

TEMP	HIGH	LOW
JANUARY	46'	19'
MARCH	59'	28'
MAY	74'	41'
JULY	93'	54'
SEPTEMBER	82'	43'
NOVEMBER	56'	24'

## DISTANCES TO OTHER CITIES

CITY	MILES
CARSON CITY	49.6
RENO	34.4
VIRGINIA CITY	40.2
LAKE TAHOE	68.4
DAYTON	38.2
YERINGTON	46.4
SMITH VALLEY	66
SILVER SPRINGS	14.2
SILVER CITY	44.9
FALLON	27.6

# YERINGTON

Nestled in a region steeped in history and western lore, Yerington offers a unique blend of rural charm and modern opportunity. First recorded by explorer John C. Fremont in 1844, the area grew around the fertile Mason Valley, named after its first settler, N.H.A. "Hock" Mason. Incorporated in 1907, Yerington thrives as Lyon County's seat, balancing industrial and agricultural lifestyles. Here, you'll find the simplicity of small-town living paired with Nevada's robust business infrastructure, just a short drive from Reno and Carson City. Yerington truly offers the best of both worlds—a welcoming community with endless possibilities.

## DISTANCES TO OTHER CITIES

CITY	MILES
CARSON CITY	64.6
RENO	71.4
VIRGINIA CITY	54.3
LAKE TAHOE	84.3
DAYTON	52.3
FERNLEY	46.4
SMITH VALLEY	21.7
SILVER SPRINGS	32.3
SILVER CITY	59
FALLON	89.6

CURRENT POPULATION YERINGTON, NV: 3,194

As of 2023

## YERINGTON CLIMATE

TEMP	HIGH	LOW
JANUARY	46'	21'
MARCH	61'	30'
MAY	76'	43'
JULY	93'	56'
SEPTEMBER	84'	47'
NOVEMBER	56'	26'

A large, rustic wooden wagon with multiple wheels is parked in a field of dry, yellowish grass. The wagon is made of dark wood and has a simple, functional design. The background shows some sparse trees and a clear sky.

# SMITH VALLEY

Near the foothills of the Sierra Nevada Mountains. Known for its thriving agriculture, the valley produces alfalfa, potatoes, onions, garlic, and grains, along with cattle ranching and feedlot operations. The charming towns of Smith and Wellington offer a peaceful lifestyle surrounded by opportunities for camping, fishing, hiking, and wildlife observation. Located just 15 miles from the California border, Smith Valley is a serene escape with plenty to explore.

**CURRENT POPULATION SMITH VALLEY, NV: 1,646**  
As of 2022

## SMITH VALLEY CLIMATE

TEMP	HIGH	LOW
JANUARY	45'	18'
MARCH	58'	27'
MAY	73'	38'
JULY	92'	52'
SEPTEMBER	82'	42'
NOVEMBER	55'	23'

## DISTANCES TO OTHER CITIES

CITY	MILES
CARSON CITY	49.7
RENO	83.5
VIRGINIA CITY	73.9
LAKE TAHOE	54
DAYTON	61.6
FERNLEY	66
YERINGTON	21.7
SILVER SPRINGS	51.8
SILVER CITY	61.2
FALLON	106.6

# SILVER SPRINGS

Silver Springs, Nevada, situated at the crossroads of US-50 and US-95A, has grown from its rural roots and now offers more conveniences than ever. The area now includes several markets and gas stations, making daily life more accessible. Major shopping is still conducted in nearby cities like Fernley or Carson City, which are only 20–40 minutes away. Known for its natural attractions, Silver Springs features Lahontan Reservoir and State Recreation Area, and the historic Fort Churchill State Park, providing opportunities for outdoor adventures.

The cost of living in Silver Springs is competitive, approximately 5% higher than the national average but more affordable than many parts of Nevada. Housing remains accessible, with median home prices around \$285,600, significantly lower than the state average.

source: bestplaces [https://www.bestplaces.net/economy/city/nevada/silver\\_springs](https://www.bestplaces.net/economy/city/nevada/silver_springs)

## DISTANCES TO OTHER CITIES

CITY	MILES
CARSON CITY	35.7
RENO	41.6
VIRGINIA CITY	26.2
LAKE TAHOE	60.7
DAYTON	24.3
FERNLEY	14.4
SMITH VALLEY	32.9
YERINGTON	32.2
SILVER CITY	31
FALLON	26.7

CURRENT POPULATION SILVER SPRINGS, NV: 5,117  
As of 2022

## SILVER SPRINGS CLIMATE

TEMP	HIGH	LOW
JANUARY	46'	24'
MARCH	60'	34'
MAY	76'	48'
JULY	95'	64'
SEPTEMBER	84'	53'
NOVEMBER	56'	31'

# SILVER CITY

Step back in time with a visit to historic Silver City, a captivating ghost town just three miles northwest of Dayton. Once a bustling hub following the Comstock discovery in 1859, Silver City flourished with hotels, saloons, and the region's first silver mill in 1862. By the 1870s, it boasted eight mills and 95 stamps, serving as a vital stop for wagons and livestock connecting the Comstock and Carson City.

Though the rise of the Virginia and Truckee Railroad led to its decline in 1869, Silver City retains its charm as a living link to Nevada's storied past. Today, it's a blend of ghost town allure and residential tranquility, offering visitors a glimpse into the vibrant days of Nevada's silver boom amidst scenic surroundings near the Lyon and Carson border. Whether you're a history buff or seeking a serene escape, Silver City is a must-see destination.

**CURRENT POPULATION SILVER CITY, NV: 105**  
As of 2022

## SILVER CITY CLIMATE

TEMP	HIGH	LOW
JANUARY	45'	29'
MARCH	55'	35'
MAY	68'	47'
JULY	88'	64'
SEPTEMBER	78'	55'
NOVEMBER	53'	35'

## DISTANCES TO OTHER CITIES

CITY	MILES
CARSON CITY	12.3
RENO	41.4
VIRGINIA CITY	3.7
LAKE TAHOE	32
DAYTON	7.1
FERNLEY	44.9
YERINGTON	59
SILVER SPRINGS	30.8
SMITH VALLEY	61
FALLON	57.3



# EDUCATION

The fourth largest school district in Nevada, Lyon County School District (LCSD) serves over 9,000 students with the support of more than 1,100 dedicated staff members. Each school is led by highly qualified educators and a caring, committed staff, all focused on meeting the diverse learning needs of every student. LCSD's motto, "Every Student...Every Classroom...Every Day," is evident in classrooms filled with students engaged in meaningful and challenging learning experiences.

Lyon County School District | 25 East Goldfield Ave. | Yerington, NV 89447  
 775-463-6800 | [www.lyoncsd.org](http://www.lyoncsd.org)

DAYTON AREA	PHONE
Sutro Elementary School	775.246.6270
Dayton Elementary School	775.246.6262
Riverview Elementary School	775.246.6170
Dayton Intermediate Elementary School	775.246.6250
Dayton High School	775.246.6240
FERNLEY AREA	
Fernley Elementary School	775.575.3420
Cottonwood Elementary School	775.575.3414
East Valley Elementary School	775.575.3332
Silverland Middle School	775.575.1575
Fernley Intermediate School	775.575.3390
Fernley High School	775.575.3400
Adul Education Information	775.575.3409
SILVER SPRINGS AREA	
Silver Stage Elementary School	775.577.5060
Silver Stage Middle School	775.577.5050
Silver Stage High School	775.577.5071
Adul Education Information	775.575.3409
SMITH VALLEY AREA	
Smith Valley Schools	775.465.2332
YERINGTON AREA	
Yerington Elementary School	775.463.6844
Yerington Intermediate School	775.463.6833
Yerington High School	775.463.6822
Adul Education Information	775.575.3409





# The University of Nevada, Reno Facts and Figures

University of Nevada, Reno | Campus Profile 2025-26



Established in 1874 as Nevada's first land-grant university, the University of Nevada, Reno serves over 24,000\* students and is committed to providing a brighter future for the citizens of Nevada, the nation, and the world. The University has a statewide impact of more than \$1.34 billion annually.



**7,000+**  
Nevada high school students enrolled annually

## FALL 2025 ENROLLMENT

- 19,800 | Total Student Enrollment\*
- 15,943 | Undergraduate Students
- 3,509 | Graduate & Professional Programs
- 348 | UNR Medical and Physician Assistant Students
- 270 | Non-Degree Students
- 3,991 | Collegiate/Dual Degree

\*Enrollment including non-degree students: **24,061**

## TUITION & FEES FOR FALL 2025

**\$10,309**

Resident

**\$28,941**

Non-Resident

*Undergraduate tuition & fees are calculated based on full-time status (30 credits for undergraduates).*

**\$178**

million

*Financial assistance given to students in 2024-25*

**\$14,645**

*Average amount awarded to all students*

*UNR Medical and Graduate School tuition costs vary based on program and year enrolled.*

*Western Undergraduate*

*Exchange*

*(WUE) offers reduced tuition for qualified non-resident students from select neighboring states.*

CALCULATE YOUR COST



## NATIONAL RECOGNITIONS



**Apple Distinguished School:** Recognized for the 2023-26 program term due to its commitment to continuous innovation in education.

**Carnegie R1 Classification:** Held since 2018 for very high research activity, a distinction shared by only 146 institutions nationally.

**U.S. News & World Report Rankings:** Ranked 192 in 2025-26, and 104 among Top Public Schools.

**Community Engagement Classification:** Held since 2020, reflecting increased collaboration with partners and student involvement in civic engagement.

**Emerging Hispanic Serving Institution (HSI):** Designated since 2013, with plans to achieve full HSI status in the 2023-27 Strategic Plan to enhance equitable student outcomes and enrollment growth.

**Wall Street Journal/College Pulse 2025 Ranking:** Ranked 201 out of 500 universities based on student outcomes, experience, and diversity.

**The New York Times College Access Index Ranking:** Ranked 48th among the country's most-selective universities ranked in order of economic diversity.

## SCHOOLS AND COLLEGES

- College of Agriculture, Biotechnology & Natural Resources
- College of Education & Human Development
- College of Business
- College of Engineering
- College of Liberal Arts
- College of Science
- Graduate School
- Honors College
- Orvis School of Nursing
- Donald W. Reynolds School of Journalism
- School of Public Health
- School of Social Work
- University of Nevada, Reno School of Medicine

## STUDENT OUTCOMES

**4,710**

Degrees Granted

*Bachelor's, master's, certificates and doctoral degrees.*

*(Winter 2024 and Spring 2025)*



ALUMNI ASSOCIATION

**125,551**

Alumni

## LEARNING ENVIRONMENT

Average Class Size **22**

Student-Faculty Ratio **17:1**

Academic Faculty **1,061**

Reno Campus Size **290 Acres**

We offer more than 500 major, minor, and certificate programs across 13 schools and colleges.



## FLEISCHMANN PLANETARIUM AND SCIENCE CENTER

The George W. Gillemot Foundation Dome at the University of Nevada, Reno's Fleischmann Planetarium will be the world's first LED dome on a university campus, transforming immersive education with ultra-bright, high-resolution visuals and fostering cross-campus collaboration in STEM, arts, and beyond.



## NEVADA STATE HEALTH LAB

Coming soon: a cutting-edge, multi-story home for the Nevada State Public Health Laboratory. This 55,000-square-foot facility will supercharge statewide diagnostics, research, and emergency response—fueling innovation and protecting Nevada's health from the heart of campus, just north of Mackay Stadium.



## UNIVERSITY OF NEVADA FIELDHOUSE

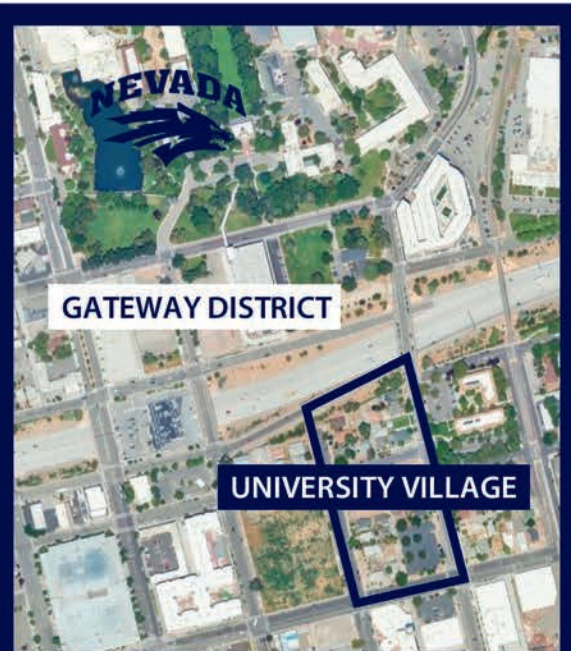
Nevada celebrated a major milestone with approval to build a new indoor fieldhouse—coming summer 2026. This 72,000-square-foot, multi-use facility will transform student recreation, wellness, and athletic training while uniting the campus and community in a shared space for success.

# INVESTING IN OUR FUTURE



## TULLOCH BUSINESS BUILDING

Located at the intersection of Interstate 80, Downtown Reno, and the University of Nevada campus, the Tulloch Business Building stands as a symbol of transformative investment in the next generation of business leaders.



## University Village

The University Village is a bold investment in affordable, high-quality housing that strengthens the University's academic community, supports Reno's growth, and fosters a sense of belonging for students, faculty, and staff who call the University—and the city—home.

# LYON COUNTY DEMOGRAPHICS

People	Lyon County, NV	NEVADA
<i>Families and Living Arrangements</i>		
Households, 2018-2022	23,290	1,163,671
Persons per household, 2018-2022	2.54	2.64
Living in same house 1 year ago, percentage of persons age 1 year+, 2018-2022	87.9%	84.5%
Language other than English spoken at home, percent of persons age 5 years+, 2018-2022	13.6%	29.8%
<i>Education</i>		
High school graduate or higher, percent of persons age 25 years +, 2018-2022	87.9%	87.1%
Bachelor's degree or higher, percent of persons age 25 years+, 2018-2022	13.6%	26.5%
<i>Health</i>		
With a disability, under age 65 years, 2018-2022	11.6%	8.8%
Persons without health insurance, under age 65 years, percent	12.7%	13.2%
<i>Economy</i>		
In civilian labor force, total, percentage population age 16 years+	58.5%	62.8%
Total accommodation and food service sales, 2017 (\$1,000)	56,325	33,979,949
Total warehousing revenue, 2017 (\$1,000)	27,169	7,654,009
Total retail sales, 2017 (\$1,000)	555,063	45,110,663
Total retail sales per capita, 2017	\$10,289	\$15,178
<i>Transportation</i>		
Mean travel time to work (minutes), workers age 16 years+ 2016-2020	29.8	24.7
<i>Income and Poverty</i>		
Median household income (in 2022 dollars), 2018-2022	\$70,026	\$71,646
Per capita income in past 12 months (in 2022 dollars), 2018-2022	\$36,330	\$37,945
Persons in poverty, percent	11.0%	12.5%
<i>Businesses</i>		
Total employer establishments, 2021	836	73,505
Total employment, 2021	8,866	1,157,850
Total annual payroll, 2021 (\$1,000)	426,534	61,961,827
Total nonemployment, percentage change establishments, 2020-2021	2.6%	-9.3%
Total nonemployer establishments, 2020	2,874	258,560
<i>Geography</i>		
Population per square mile, 2020	29.6	28.3
Land area in square miles, 2020	26.0	109,860.46
FIPS Code	32019	32



# LYON COUNTY DEMOGRAPHICS

People	Lyon County, NV	NEVADA
<i>Population</i>		
Population Estimates, July, 1 2023	60,903	3,177,772
Population Estimates, April, 1 2020	59,235	3,104,624
Population, percentage change - April 1, 2020 (estimates base) to July 1, 2023	2.8%	1.3%
Population, Census, April 1, 2020	59,235	2,700,551
<i>Age and Sex</i>		
Persons under 5 years, percent	5.2%	5.5%
Persons under 18 years, percent	20.9%	21.7%
Persons 65 years and over, percent	21.4%	16.9%
Female persons, percent	48.2%	49.5%
<i>Race and Hispanic Origin</i>		
White alone, percent	88.8%	72.1%
Black or African American alone, percent	1.5%	10.8%
American Indian and Alaskan Native alone, percent	3.4%	1.7%
Asian alone, percent	1.8%	9.4%
Native Hawaiian and Other Pacific Islander alone, percent	0.4%	0.9%
Two or More Races, percent	4.0%	5.1%
Hispanic or Latino, percent	19.6%	30.3%
White alone, not Hispanic or Latino, percent	72.0%	45.7%
<i>Population Characteristics</i>		
Veterans, 2018-2022	6,062	203,118
Foreign born persons, percent, 2018-2022	6.7%	19.1%
<i>Housing</i>		
Housing units, July 1, 2022	6.7%	1,328,725
Owner-occupied housing unit rate - 2018-2022	73.0%	58.4%
Median value to owner-occupied housing units - 2018-2022	\$238,600	\$373,800
Median selected monthly owner costs - with mortgage, 2018-2022	\$1,365	\$1,791
Median selected monthly owner costs - without mortgage, 2018-2022	\$374	\$491
Median gross rent, 2018-2022	\$1,062	\$1,382
Building permits, 2022	815	20,031





# LOCAL SERVICES



# LOCAL SERVICES

## UTILITIES ETC.

### **DMV**

Nevada Department of Motor Vehicles  
www.dmv.nv.org  
775.684.4368

### **Electricity/Gas**

NV Energy  
775.834.4444

### **Garbage & Recycling**

Waste Management  
775.343.7596

### **Cable | Internet | TV**

Spectrum  
www.spectrum.com  
855.860.9068 (new service)  
833.949.0036 (support)

### **Lyon County Water & Sewer**

775.246.6220

### **Southwest Gas Corporation**

877.860.6020

### **Silver Springs Water Co.**

775.288.2020

### **Telephone**

AT&T  
800.331.0500

### **Voter Registration**

775.887.2087

### **Fernley Utilities**

775.784.9930

### **Western Nevada Community College**

775.445.3000  
www.wnc.edu

### **United States Post Office**

800.275.8777

### **Highway Patrol**

775.687.9600

### **Libraries**

Fernley Branch Library  
775.575.3366

Smith Valley Library  
775.465.2369

Dayton Valley Branch Library  
775.246.6212

### **Fire Departments**

Central Lyon County Fire Protection District  
775.246.6209

Smith Valley Fire Department  
775.465.2577

Mason Valley Fire Protection  
775.463.2261

### **Police Departments**

Lyon County Sheriff's Department  
775.575.3350

Yerington Police Department  
775.463.2333

## MEDICAL FACILITIES

### **Carson-Tahoe Dayton Medical Center**

901 Medical Center Dr. Dayton, NV  
775.445.7210

### **Banner Health Center**

1260 Nevada Pacific Pkwy. Fernley, NV  
775.575.7171

### **South Lyon Medical Center**

213 S Whitacre St. Yerington, NV  
775.463.2301

### **Renown Medical Group - Silver Springs**

3595 US-50. Silver Springs, NV  
775.577.2117

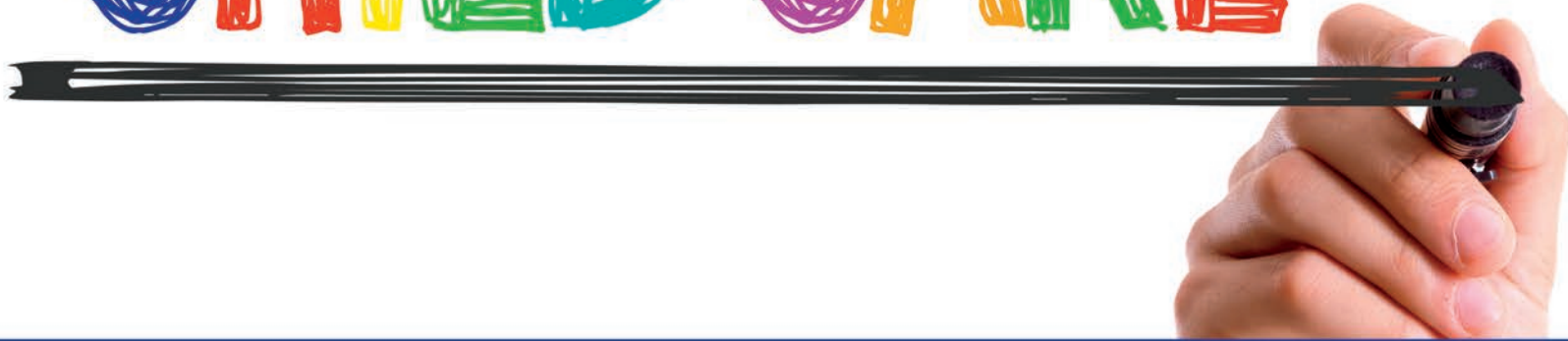
### **Renown Medical Group - Fernley**

1343 W Newlands Dr. Fernley, NV  
775.982.5000

### **Fernley Mental Health Clinic**

395 US-95A. Fernley, NV  
775.575.7744

# CHILD CARE



**Cottonwood Headstart**

925 Farm District Rd. Fernley, NV  
775.575.9870

**Zoo n Around Learning Center**

380 Crimson Rd. Fernley, NV  
775.575.9666

**A Step Ahead Preschool**

945 N Clover Ln. Fernley, NV  
775.575.1122

**Boys & Girls Club of Mason Valley**

124 N Main St. Yerington, NV  
775.463.2334

**Dayton Valley Learning Center**

357 Dayton Valley Rd. Dayton, NV  
775.246.5111

**Building Blocks Daycare**

219 Center St., Yerington NV 89447  
775-846-2250

**From Cradles to Crayons**

801 Overland Loop, #108 Dayton, NV  
775.241.2449

**Peas & Carrots Home Child Care**

280 Wagon Wheel Way Dayton, NV  
775.720.2989

**Our Second Home Daycare**

1044 Inglewood Dr., Fernley NV 89408  
775-302-3131

## YOUTH SERVICES

**The Children's Cabinet**

775.856.6200

**Boys & Girls Clubs of Mason Valley**

[www.bgcmasonvalley.org](http://www.bgcmasonvalley.org)  
Yerington 775-463-2334  
Dayton 775-344-4505  
Silver Springs 775-909-4072  
Hawthorne 775-945-2428

**Nevada Division of Child & Family Services**

775.684.4400

**Big Brothers Big Sisters of Northern Nevada**

775.352.3202

**Lyon County 4-H Youth Development**

504 S Main St, Yerington NV 89447  
775-463-6541



# SENIOR SOURCES

**American Association of Retired Persons (AARP)**

888.687.2277

**Lend-a-Hand Senior Services**

775.322.8414

**Social Security & Medicare Eligibility Information**

772.1213

**Senior Companion Program**

775.358.2322

**Carson City Senior Center**

775.883.0703

**Aging & Disability Services Division**

775.688.2964

**Northern Nevada Center for Independent Living**

775.353.3599

**Health & Human Services Department**

775.684.4000

**Veterans Administration Benefits/Info**

800.827.1000

**Retired & Senior Volunteer Program (RSVP)**

**Home Companion Program**

775-687-4680

[www.nevadaruralrsvp.org](http://www.nevadaruralrsvp.org)

## SENIOR CENTERS

**Dayton Senior Center**

320 Old Dayton Valley Rd.

Dayton, NV 89403

Phone: (775) 246-6210

**Hours of Operation:**

Monday-Friday, 8:00am-4:30pm

**Fernley Senior Center**

105 Lois Ln.

Fernley, NV 89408

Phone: (775) 575-3370

**Hours of Operation:**

Monday 10am-6pm, Tuesday-Friday  
8am-4pm

**Yerington Senior Center**

117 Tilson Rd.

Yerington, NV 89447

Phone: (775) 463-6550

**Hours of Operation:**

Monday-Friday 8:00am-  
4:30pm

**Silver Springs Senior Center**

2945 Ft. Churchill Rd.

Post Office Box 149

Silver Springs, NV 89429

Phone: (775) 577-5014

Fax: (775) 577-5209

**Hours of Operation:**

Monday and Friday 8:00am-4:30pm  
Tuesday-Thursday 9:30am-6:00pm

# PET & ANIMAL SERVICES



## VETERINARIANS

### **Animal Care Center**

805 E Main St D.  
Fernley, NV  
775.575.5851

### **Moffitt Animal Clinic**

305 US-95 ALT.  
Fernley, NV  
775.835.8387

### **Dayton Valley Veterinary Hospital**

14 Enterprise Way.  
Dayton, NV  
775.246.7775

### **Lahontan Valley Vet Clinic**

3660 Schurz Hwy  
Fallon NV  
775-423-7528

### **Dayton Riverside Veterinary Hospital**

210 Dayton Valley Rd.  
Dayton, NV  
775.246.5392

## SHELTERS & RESCUE ORGANIZATIONS

### **Lyon County Animal Services**

3705 US-50.  
Silver Springs, NV  
775.577.5005

### **Safe Haven/Build A Rescue Kennel Inc.**

N 28 Hwy-95A.  
Yerington, NV  
775.463.1842

### **Yerington Animal Control**

215 Trowbridge Rd.  
Yerington, NV  
775.364.8345

## KENNELS, BOARDING & DAYCARE

### **Pets Bed & Breakfast**

81 Mason Rd.  
Fernley, NV  
775.867.3840

### **Scooby Dooz Dog Grooming**

801 Overland Loop #305.  
Dayton, NV  
775.241.9511

### **Furr-Nley's Pet Spa**

140 E Main St #E.  
Fernley, NV  
775.302.3877

### **The Poodle Palace**

810 Old Hwy 40  
Fernley, NV  
775.575.4929

### **Classy Pet**

115 E Main St.  
Fernley, NV  
775.575.1131

# LOCAL CHURCHES & FAITH CENTERS

## **Dayton Valley Community Church**

407 V&T Way  
Dayton, NV 89403  
775.241.7167

## **St. Robert Bellarmine Catholic Church**

625 Desert Shadows Ln.  
Fernley, NV 89408  
775.575.4011

## **The Church of Jesus Christ of Latter-day Saints**

5470 Elm St.  
Silver Springs, NV 89429

## **Fernley Free Methodist**

100 N W St.  
Fernley, NV 89409  
775.575.4424

## **Grace Baptist Church**

460 W Main St. #108  
Fernley, NV 89408  
775.575.7000

## **Faith Lutheran Church**

12 N West St.  
Yerington, NV 89447  
775.463.5675

## **Calvary Chapel Dayton Valley**

28 Enterprise Way  
Dayton, NV 89403  
775.241.9213

## **CenterPoint Christian Fellowship**

100 Breakwater Dr.  
Dayton, NV 89403  
775.246.4108

## **Harvest Baptist Church**

328 N. West St.  
Yerington, NV 89447  
775-344-8414

## **Living Stones Church**

868 Cottonwood Ln  
Fernley, NV 89408  
775.302.3507



# HEALTH CLUBS



## **Fitness For 10**

130 Shadow Ln #2  
Fernley, NV 89408  
775.980.6910

## **Anytime Fitness-Yerington**

243 N Main St.  
Yerington, NV 89447  
775.463.3848

## **Liberty Fitness-Fernley**

888 Cottonwood Ln.  
Fernley, NV 89408  
775.404.1116

## **Curves**

801 Overland Loop Ste. 402  
Dayton, NV 89403  
775-246-9900

## **River Vista Fitness-Dayton**

230 Dayton Valley Rd.  
Dayton, NV 89403  
775.246.3650



# TRANSPORTATION

**Reno Tahoe International Airport is the only major airport in Reno/Sparks which has many destination points around the world. From Lyon County areas it is 30 minutes to an hour drive into Reno.**

**Reno/Tahoe International Airport**

2001 E. Plumb Lane  
775.328.6400  
[www.renoairport.com](http://www.renoairport.com)  
(28 miles west of Fernley)

**Carson City Airport**

2600 E College Parkway  
775.841.2255  
[www.flycarsoncity.com](http://www.flycarsoncity.com)

**South Lake Tahoe Airport**

1901 Airport Road  
530.318.5489  
[www.cityofslt.us/182/airport](http://www.cityofslt.us/182/airport)

**Taxi Service**

Reno Sparks Cab Co. - 775.333.3333  
Whittlesea Taxi - 775.322.2222  
Yellow Cab Company - 775.355.5555

**Silver Springs Airport**

1991 Hwy 50  
13 miles south of Fernley  
6,600 foot long paved runway  
775.515.5166  
[www.silverspringsregionalairport.com](http://www.silverspringsregionalairport.com)

**Fallon Municipal Airport**

Hwy 50A  
27 miles east of Fernley  
24 hours, 5,700 ft runway, full serve  
775.423.5107

**SAMSARG Field**

1925 US Hwy 95A S  
Fernley, NV 89408  
3 Miles South of Fernley  
2 Runways  
Longest: 3974 X 40 ft, paved  
775-471-7301  
[samsargaviation.com/samsarg-field](http://samsargaviation.com/samsarg-field)



# THINGS TO DO

# DAYTON THINGS TO DO



## **Dayton Valley Days**

Dayton Valley Days are a community get together for two days out of the year that are jam packed with events complete with a Chili Cook-Off and numerous parades. The World Famous Dayton Valley Days Pet Parade has grown to be quite popular where owners and their pets get to prance around Dayton.

## **Oodles of Noodles and Pasta Cook-Off**

This annual event is held in Dayton and hosted by the Dayton Chamber of Commerce. This event celebrates Dayton's Chinese and Italian cuisine with a massive pasta cook-off, live entertainment, vendor booths, gun slingers, food, and much more!

## **V&T Railway**

Experience a historical train ride with wonderful scenery of the Comstock and also enjoy other themed train rides! The themed train rides include "A day out with Thomas the Train" and "Pumpkin Patch Trains" in October. Don't miss the "Candy Cane Express Train" in November and December. They have 7 departures daily from their station and no reservation is required.

## **Dayton Museum**

The Dayton Museum is located in Dayton's 1865 schoolhouse and is operated by the Historical Society of Dayton Valley. Admission is free and the museum is opened for the year starting in March and is open until November.

## **Dayton State Park**

Dayton State Park consists of 160 acres with typical Great Basin desert typography. Cotton wood, desert sage, rabbit brush and willows are present and the lower park borders the Carson River. The park features the remains of the Rock Point Mill built in 1861, a remnant of Dayton's mining glory days. Originally a Paiute fishing camp, the park provides a scenic site to camp, picnic, hike or hold group outings.



# FERNLEY THINGS TO DO



## Senior Pro Rodeo

Senior Pro Rodeo is held at Fernley Out of Town Park and is a two day event in the summer. This rodeo includes 2 timed events and 3 full rodeos. Watch all sorts of rodeo events from bull riding to barrel racing during those warm August nights.

## Fernley 95a Raceway

Fernley 95a Raceway is Nevada's premiere motorsports complex. This track is located just a short drive from Reno and has hosted some of Northern Nevada's most prestigious national and local racing events. From the National Sprint Car Series to Off-Road Competitions, Fernley 95a Raceway offers it all!

## Welcome to Fernley 4th of July

Come out to Fernley and celebrate the 4th of July the way it's meant to be celebrated! The day begins with a pancake breakfast at 8:00am which then leads to a parade down Main Street at 10:00am. The parade is kicked off by the "Show n Shine" cars and is then lead down Main Street by Nevada Veterans Coalition with the presentation of the National Colors. Once the parade ends, we head on over to the park for some fun and entertainment. It will be complete will vendors as well as food and then once dusk rolls around we lay out on the baseball fields and watch the fireworks!

## Burning Man

Burning Man is an annual art festival located in the Black Rock Desert of Nevada. Tens of thousands of people gather in Nevada's desert to create Black Rock City which is a temporary art and self expression community. This event happens over labor day weekend and the total travel time from Fernley to Black Rock Desert is 1 hour 30 minutes.

## Fernley Christmas Extravaganza!

FA festive afternoon filled with Christmas cheer, Santa, and The Grinch, hosted by the Fernley ACES-Art, Culture, & Event Squad! Drop by the Main Street Art Park (by the big turtle) at the Christmas Village on Saturday, December 14th, from 1-4 PM. Explore the charming Christmas Village houses, snap photos with Santa and The Grinch, sip on hot chocolate or coffee, enjoy Christmas music, and partake in a few fun activities. It's a perfect way to celebrate the season with the whole family!



# YERINGTON

## THINGS TO DO

### **Lyon County Fair & Rodeo**

Every August the Lyon County Fair and Rodeo is held at the Lyon County Fair Grounds. This family event includes a fair, rodeo, carnival, demolition derby, kids night, tractor pulls, parade and numerous other family friendly events.

### **Night in the Country**

Night in the Country is a three day Country & Western music concert held away from the big city lights for over 15 years, out in the quiet farming town of Yerington. They provide top name music stars and offer a great music line up and camping at the site.

### **Yerington Theater for the Arts**

Yerington Theater for the Arts is a non-profit organization operating in Yerington, Nevada whose mission is to enrich the quality of life in the community through the arts. They operate the Jeanne Dini Center and present performing arts, visual art exhibitions, art education programs, and cultural heritage events.

### **Lyon County Museum**

The main building of the Lyon County Museum holds artifacts that reveal the culture and history of its people. Some of the exhibits include housewares, clothing, a courthouse and pictures of the Anaconda Mining Company. A visit to this museum presents a great opportunity to learn more about American culture.

### **Anaconda Copper Mine**

The Anaconda Copper Mine was once the lifeblood of Yerington. The mine operated from 1951 to 1978 and during that time, the pit produced copper ore at a rate of 13,000 tons a day, six days a week. Today all that is left of the mine is a spectacular view of the open pit, with the blue lake at the center. It is worth the detour on the outskirts of Yerington to enjoy the grand view of the lake and the mountains beyond Mason Valley.

### **Lyon County Courthouse**

Construction of The Lyon County Courthouse took place from 1911-1912 after the previous courthouse in Dayton burned down. The building was made of brick and featured a mix of Beaux-Arts and Neoclassical design. Today the courthouse is listed on the National Register of Historic Places.

### **Dini's Lucky Club**

Dini's Lucky Club is the oldest family-owned casino in Nevada. This club has been operating since 1933 and a visit to Yerington is not complete without a stop at this place. Aside from the gaming, Dini's coffee shop serves breakfast, lunch and dinner. When looking for a place to have a good meal, you are sure to find it at Dini's.



# SMITH VALLEY THINGS TO DO



## **Walker River Resort**

The great scenic beauty of unspoiled western Nevada awaits at this wonderful ranch style resort. The West Walker River offers a great environment for float trips, recreational off-roading trails, and great fly fishing. For more information visit [www.wrrresort.com](http://www.wrrresort.com).

## **C G Bar**

Make sure to stop by this locally owned, best little bar in Smith Valley and enjoy some drinks, fun and great food!

## **Wilson Canyon Nature Hiking Trail**

This well marked trail leads you through a portion of Wilson Canyon but also the washes and side canyons that drain into the main canyon. With spectacular desert scenery and extraordinary geological features, you make one of the best hiking trails in the area.

## **Smith Valley Rotary Fun Days**

Come enjoy a weekend full of fun at the annual Smith Valley Rotary Fun Days. This event is complete with food, fun and vendors. For more information please visit [www.portal.clubrunner.ca/8460](http://www.portal.clubrunner.ca/8460)

## **Running R Arena**

Nestled in the heart of Smith Valley, Nevada, 15 miles east of Highway 395 from Hobrook Junction on State Route 208. There are now five generations that have lived and farmed our property. We would welcome the opportunity to meet you. Our farm is awesome!

775.771.1852 (Tom) or 775.720.9405 (Josh)

Produce Stand with eggs and honey open 9-5 daily.

[www.rennerfarms.co](http://www.rennerfarms.co)

# SILVER SPRINGS THINGS TO DO



## **Lahontan State Park**

Lahontan Lake located in Silver Springs, became a state park on July 1, 1971. You can access the park from US Hwy 50 East or from US Hwy 95 South. Choose from over 10 beaches to camp on located around the lake. Here you can enjoy fishing, camping, and other boating activities.

## **Fort Churchill State Park**

Fort Churchill was an integral part of Nevada's history and the American West. Fort Churchill was built in 1861 to provide protection for early settlers and to guard Pony Express mail runs. Visitors can walk through designated trails to study the ruins and the park also features the renovated Buckland Station.

# GOLF COURSES

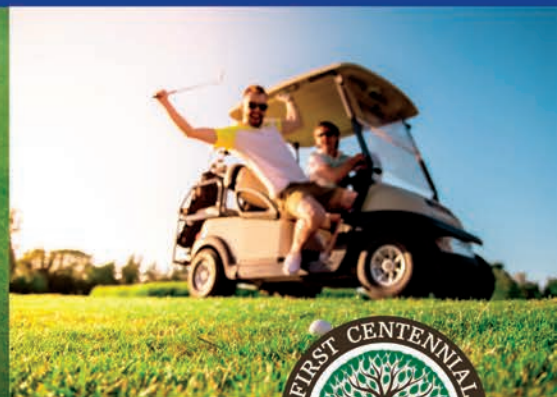


## Fernley

The Golf Club at Fernley  
50 Desert Lakes Drive  
775.853.6933  
18 holes/ Par 72

## Dayton

Dayton Valley Golf Club  
101 Palmer Drive  
775.246.7888  
18 holes/Par 72





# WINTER RECREATION

The Reno / Lake Tahoe region has a wide variety of top cross-country skiing areas, downhill ski resorts, and snow play areas. Sprinkled around the Lake Tahoe area, these winter sports areas are blessed with abundant snow, excellent accommodations, and easy access from Reno, Sacramento, and the Bay Area. In addition to downhill and cross-country skiing, winter sports opportunities include snowshoeing, sledding, snow tubing, and snowmobiling.

## SLEDDING, SNOWSHOEING, ETC!

**Tahoe Donner Snow Play Area**- (530) 587-9400 ext 0 - 12790 Northwoods Blvd. Truckee

**Soda Springs Snow Park**- (530) 426-3901 - I80 at Soda Springs exit

**Sugar Bowl Sledding & Snow Play** - (530) 426-9000 - I80 at Soda Springs exit

**Northstar at Tahoe** - (530) 562-2013 - south of Truckee on Highway 267

**Heavenly Adventure Peak Snow Park** - (775) 586-7000 - South Lake Tahoe

**Boreal's Tubing Park** - (530) 426-3666 - I80 at Donner Summit

**Hansen's Resort**- (530) 544-3361 - South Lake Tahoe

**Granlibakken's Sledhill**- (800) 543-3221 - Tahoe City, west shore Lake Tahoe

**Kingvale Sledding and Tubing Park** - (916) 622-6654 - I80 at Kingvale exit

**Woodward Tahoe** - (530) 426-1114 - 19749 Boreal Ridge - Soda Springs

**Hope Valley Outdoors**- (530) 721-2015 - Pickett's Junction, SR-88 and SR-89

**Wildslide Tahoe**- (800) SKI-ROSE - On Mt. Rose Highway

## Cross Country Skiing

### Caples Lake Resort

1111 Highway 88, Kirkwood, CA  
209.258.8888

[www.capleslakeresort.com](http://www.capleslakeresort.com)

### Desolation Hotel Hope Valley

14255 Highway 88, Hope Valley, CA  
530.694.2203

[www.desolationhotel.com](http://www.desolationhotel.com)

### Royal Gorge Cross Country

9411 Pahatsi Rd. Soda Springs, CA  
530.426.3871

[www.royalgorge.com](http://www.royalgorge.com)

## Snowmobiling

### Lake Tahoe Adventures

South Lake Tahoe, CA  
800.490.3955

[www.laketahoeadventures.com](http://www.laketahoeadventures.com)

### Zephyr Cove Snowmobiling Center

760 Hwy 50, Zephyr Cove, NV  
775.588.4906 / 800.238.2463

[www.zephyrcove.com](http://www.zephyrcove.com)



# TAHOE AREA RESORTS

	Elevation	Terrain (Acres)	Vertical Drop	Chairlifts	Lessons	Beginner Runs %	Intermediate Runs %	Advanced Runs %
<b>Boreal</b> (530) 426-3666	7,700'	380	500'	8	YES	30	55	15
<b>Diamond Peak</b> (775) 832-1177	8,540'	655	1,840'	7	YES	18	46	36
<b>Donner Ski Ranch</b> (530) 426-3635	7,781'	460	750'	6	YES	25	50	25
<b>Granlibakken</b> (530) 583.4242	6,300'	7	300'	2	YES	60	40	0
<b>Heavenly</b> (775) 586-7000	10,067'	4,800	3,500'	28	YES	2	80	18
<b>Homewood</b> (530) 525-2992	7,880'	1,260	1,650'	8	YES	15	40	45
<b>Kirkwood</b> (209) 258-6000	9,800'	2,300	2,000'	15	YES	12	30	58
<b>Mt. Rose</b> (775) 849-0704	9,700'	1,200+	1,800'	8	YES	20	30	50
<b>Northstar</b> (530) 562-1010	8,610'	3,170	2,280'	20	YES	25	60	27
<b>Sierra-at-Tahoe</b> (530) 659-7453	8,852'	2,000	2,212'	14	YES	25	50	25
<b>Soda Springs</b> (530) 426-1010	7,300'	200	550'	5	YES	30	40	30
<b>Palisades Tahoe</b> (800) 403-0206	9,050'	3,600	2,850'	29	YES	13	45	30
<b>Sugar Bowl</b> (530) 426-9000	8,383'	1,650	1,500'	12	YES	17	45	38
<b>Tahoe Donner</b> (530) 587-9444	7,350'	120	600'	4	YES	40	60	0

# NEVADA STATE PARKS

Camping, fishing, hiking, swimming, nature study, star-gazing—not your thing? How about mountain biking, horseback riding, boating, water skiing, snowshoeing, ice-skating? Choose your favorite outdoor activity and Nevada State Parks will provide a place for it. Nevada's 28 state parks, recreation areas and historic sites are stretched across terrains as diverse as alpine forests and bone-dry deserts. Among them are natural lakes and man-made reservoirs, such as world-famous, 22 mile long Lake Tahoe or the much smaller Echo Canyon and its 35-acre reservoir.

Other parks provide glimpses into the past. Valley of Fire is one of the state's oldest, with 3,000-year-old petroglyphs carved in sandstone and breathtaking views of the maroon-colored rock formations created during the age of the dinosaurs. Mormon Station in Genoa and the Old Las Vegas Mormon Fort feature replicas of 19th-century fortifications and visitor centers explaining regional history.

Many campgrounds and RV facilities are open all year, depending on the weather. You can even stay in a yurt at Cave Lake State Park near Ely. Trailheads are well marked, and facilities at many parks include RV dump stations, showers and day use facilities for groups. For more information on Off-highway Vehicles (OHV) registration, go to Department of Motor Vehicles at [dmv.nv.com](http://dmv.nv.com).

Beaver Dam State Park

Berlin-Ichthyosaur State Park

Big Bend of the Colorado State Recreation Area

Buckland Station State Park

Cathedral Gorge State Park

Cave Lake State Park

Cave Rock State Park

Dayton State Park

Echo Canyon State Park

Elgin Schoolhouse State Historic Site

Fort Churchill State Historic Park

Ice Age Fossils State Park

Kershaw-Ryan State Park

Lahontan State Recreation Area

Mormon Station State Historic Park

Old Las Vegas Mormon Fort State Historic Park

Rye Patch State Recreation Area

Sand Harbor State Park

South Fork State Recreation Area

Spooner Backcountry

Spring Mountain Ranch State Park

Spring Valley State Park

Valley of Fire State Park

Van Sickle State Park

Walker River State Recreation Area

Ward Charcoal Ovens State Historic Park

Washoe Lake State Park

Wild Horse State Recreation Park



# FIRST CENTENNIAL TITLE CO. OF NEVADA

[www.FirstCentennial.com](http://www.FirstCentennial.com)

## MISSION STATEMENT

...

**FIRST CENTENNIAL TITLE IS YOUR PREEMINENT PROVIDER OF TITLE AND ESCROW SERVICES IN NORTHERN NEVADA. OUR EXPERIENCED TEAM IS COMMITTED TO BRINGING COMPREHENSIVE SOLUTIONS THROUGH OUR "IN IT TO CLOSE IT" CULTURE. WITH UNSURPASSED RESOURCES WE CREATE PEACE OF MIND MAKING YOUR REAL ESTATE EXPECTATIONS A REALITY.**

### **RENO MAIN**

1450 Ridgeview Dr. #100  
Reno, NV 89519  
Phone: 775.689.8510  
Fax: 775.689.8520

### **PLAZA**

3700 Lakeside Dr. #110  
Reno, NV 89509  
Phone: 775.689.1810  
Fax: 775.800.5701

### **DAMONTE RANCH**

500 Damonte Ranch Pkwy. #820  
Reno, NV 89521  
Phone: 775.737.5090  
Fax: 775.571.1441

### **SPARKS**

4870 Vista Blvd. #110  
Sparks, NV 89436  
Phone: 775.689.8551  
Fax: 775.507.3998

### **CARSON CITY**

896 W. Nye Ln. #104  
Carson City, NV 89703  
Phone: 775.841.6580  
Fax: 775.507.3995

### **ZEPHYR COVE**

212 Elks Point Rd. #107  
Zephyr Cove, NV 89448  
Phone: 775.841.6580  
Fax: 775.507.3995

### **GARDNERVILLE / MINDEN**

1352 Hwy 395 #114  
Gardnerville, NV 89410  
Phone: 775.737.5110  
Fax: 775.737.5109

### **FERNLEY**

1032 Inglewood Dr. #100  
Fernley, NV 89408  
Phone: 775.583.7100  
Fax: 775.583.7101

### **FALLON**

131 South Maine Street #201  
Fallon, NV 89406  
Phone: 775.583.7251  
Fax: 775.583.7101